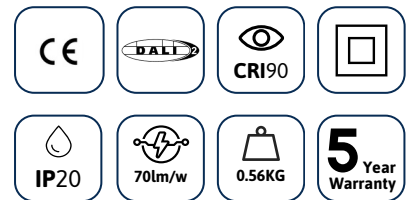


# MINITRAQ PIXEL 3

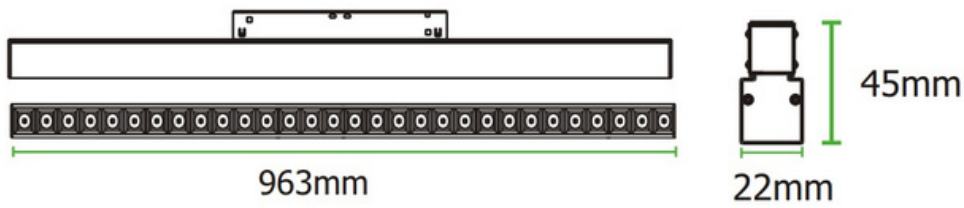
The Minitraq Pixel is the ideal choice for ultimate glare control and stealth-like illumination. The Pixel 3 provides a bright pool of light below for targeted workplace illumination of task areas and for higher ceilings.



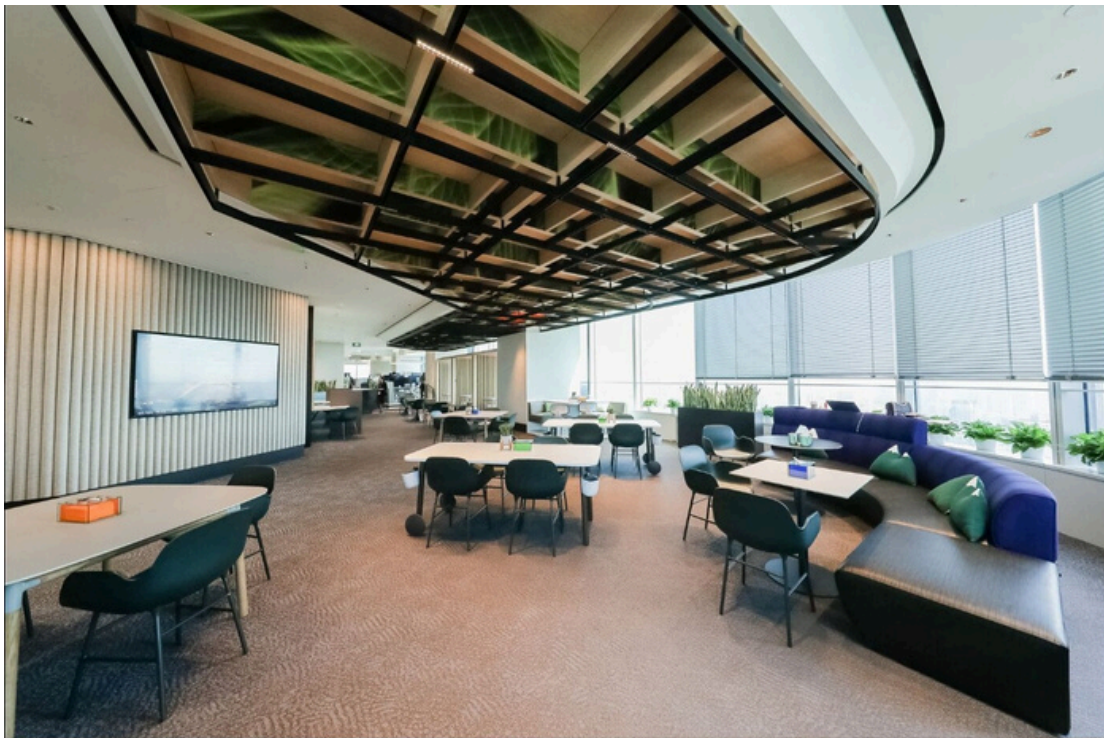
## TECHNICAL INFORMATION

<b>Installation</b>	Track Mounted (TM)
<b>Body Colour</b>	White (W) or Black (B)
<b>Dimensions</b>	963mm x 22mm x 45mm
<b>Lumen Output</b>	2000lm (28W)
<b>Colour Temperature</b>	3000K or 4000K
<b>Colour Rendering Index</b>	CRI90
<b>Optical Distribution</b>	Narrow Beam (NB)
<b>Ingress Protection</b>	IP20
<b>Controls</b>	DALI (DD)
<b>Emergency</b>	-
<b>Accessories</b>	-

## DIMENSIONS



## PRODUCT SHOWCASE



## PRODUCT CODE

**MINP3/TM/B/2100LM/4000K/90/NB/20/DD**

Minitraq Pixel 3, track mounted, black finish, 2100 lumens, 4000K, CRI90, narrow beam, IP20 rated, DALI dimming

SPECIFICATIONS MAY BE ALTERED WITHOUT ADVANCE NOTICE.



Contact us for more information

020 8687 0190

sales@edgelighting.co.uk



**EDGE**  
LIGHTING

EDGELIGHTING.CO.UK